

The logo for ASG, consisting of the lowercase letters 'asg' in a bold, sans-serif font, positioned within a white rounded rectangular box on a dark background.

---

Fabrications  
Stainless concepts  
Galvanised components  
Installations

**Case Studies**

---

[www.asgfabrications.com](http://www.asgfabrications.com)

# Broad Street Plaza, Halifax



**Facilities Include:**  
VUE cinema, TGI Friday,  
JD Wetherspoon, Premier  
Inn, Frankie and Benny's



Mixed use retail development with multi story car park.

ASG Fabrications Ltd undertook the design, supply and installation of the complete architectural metalwork package. Working closely with the client's architects and designers to provide workable solutions for feature balustrades able to withstand high crowd loadings.

ASG's role in this project included design, supply and installation of architectural metalwork comprising; Stainless steel balustrades with glass infills, Mild steel balustrades with perforated sheet infills, Feature staircase's and Balconies with glass infills. Glazed panels and support frame to access bridge.

## Client Name

Marshall Construction (WY) Ltd

## Construction Costs

Overall project value £25 million ASG  
contract value £250,000

## Size of Project

280,000 sqft

# BMW Showroom, Huddersfield



A new BMW car showroom facility.

ASG Scope of works was to provide a complete bespoke design and installation for the architectural metalwork package for various balustrade elements ranging from high specification to the internal 1st floor and feature staircase and flexible external systems.

ASG's role in this project included design space, supply and installation of architectural metalwork comprising; high spec stainless balustrade with structural glass infill panels to the 1st floor and feature staircase, mild steel feature balustrade including stainless steel handrail, fabricated stair carriages and external mild steel flexible balustrade systems.

## Client Name

PDR Construction Limited

## Construction Costs

ASG contract value £85,000

## Size of Project

137,670 sqft

# Mini Showroom, Huddersfield



ASG provided a complete bespoke design and installation of the architectural metalwork package; ranging from the high specification stainless steel internal 1st floor balustrade to the modular galvanised balustrading within the exterior service areas.

Design, supply and installation of architectural metalwork;

- » High specification stainless steel balustrade with structural glass infill panels to the 1st floor and staircase.
- » Polyester powder coated balustrade incorporating stainless steel handrail to the service viewing area.
- » External modular galvanised balustrade systems within the valeting and service bays.
- » Stainless steel bump rails within the ground floor showroom area.

## Client Name

PDR Construction Limited

## Construction Costs

ASG contract value £85,000

## Size of Project

137,670 sqft



A new multi-disciplined engineering facility comprising of new CNC, mechanical, maintenance and fabrication workshops including vehicle maintenance area.

ASG Fabrications Ltd scope of works included the supply and install of the architectural metalwork; working with the client's architects and designers to create a working solution from the clients conceptual design brief.

Design, supply and installation of architectural metalwork comprising; Mild steel feature balustrade with stainless steel wire infills to a high level link corridor, feature access stairs, escape stairs and workshop access stairs. Mild steel galvanised external spiral staircase and balustrade from first floor to the courtyard area.

## Client Name

GMI Construction Group PLC

## Construction Costs

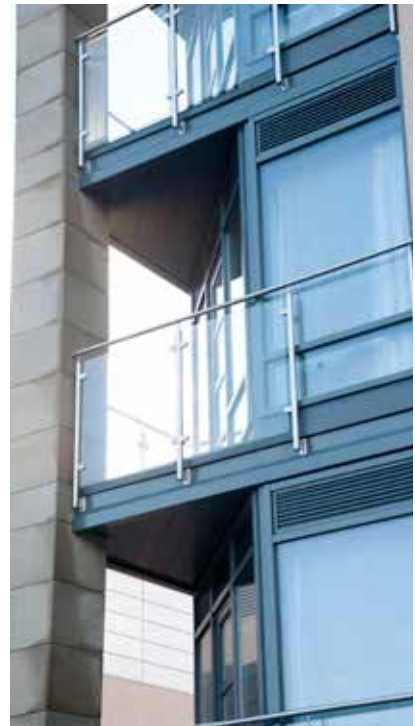
Overall project value £7.5 million

ASG contract value £69,200

## Size of Project

54,000 sqft

# Premier Inn, Halifax



A brand new Premier Inn located in the heart of Halifax Town Centre.

ASG Fabrications Ltd undertook the design, supply and installation of the hotel internal feature staircase balustrades and external balcony balustrades.

Design, supply and installation of the internal metalwork package comprising:

- » Stainless steel balustrades complete with glass infill panels.
- » External balcony glazed balustrading.
- » Back of house staircase balustrades and handrails.

## Client Name

Marshall Construction (WY) Ltd

## Construction Costs

Project value £5 million

ASG contract value £120,000

# Vue Cinemas, Halifax



Located in Halifax town Centre in the Broad Street Plaza, the Vue 9 screen Cinema opened in October 2012.

ASG Fabrications Ltd undertook the design, supply and installation of the main entrance feature staircase complete with glazed balustrade and glass infill panels. ASG worked closely with the client's architects and designers to provide workable solutions for the feature balustrade able to withstand high crowd loadings. We also designed and provided the external terrace glazed balustrades and back of house access metalwork such as ladders and escape route handrails.

## Client Name

Marshall Construction (WY) Ltd

## Construction Costs

Project value £3 million  
ASG contract value £75,000

## Size of Project

1400 seat capacity

# New Morrisons Store, Elland



ASG undertook the design, supply and installation of the complete secondary steelwork and architectural metalwork packages for the supermarket development with underground and external car parking.

Comprising of stainless steel balustrades with glass infills to customer areas, mild steel staff circulation staircases and balustrades, escape/link bridges, protection bollards and bump rails, trolley bays, Armco protection barriers, glazed entrance canopies, AHU plant decks and support steel work to supports.

## Client Name

Marshall Construction (WY) Ltd

## Construction Costs

Overall project value £5 million  
ASG contract value £250,000

## Size of Project

5,000 sqm sales floor





New assembly hall with link corridor and re-modeled dining area. ASG undertook the design, supply and installation of the main structural steel frame and internal steelwork alterations.

**“Another project delivered on time and on budget, completed to ASG Fabrications Ltd usual high standards of workmanship” Rob Smith RSR Director**

Design, supply and installation;

- » Main structural steelwork frame to form new assembly hall.
- » Alterations to existing internal steelwork.
- » External balustrades and bollards.

Client Name

RSR Construction Ltd

Construction Costs

Overall project value £1 million  
ASG contract value £55,000

Size of Project

500 sqm hall floor area  
20 Tonne frame



A new 62 bedroom Travelodge hotel with 4 floors, Costa coffee shop, landscaping and car parking area.

ASG undertook the design, supply and install of a 6 flight external feature galvanised steel staircase including balustrades.

This included:

- » Twin tubular steel feature column construction
- » Cantilevered floor landings and linking stair carriages.
- » Standard Travelodge specification balustrade.
- » Composite roof structure to staircase.

#### Client Name

GMI Construction Ltd

#### Construction Costs

Overall project value £2.5 million

ASG contract value £35,000.00

#### Size of Project

100,000 sq ft



Wednesday 6th October – Sunday 17th October 2010.

ASG were contacted by FK Howard Limited, construction consultants already involved with the development of Blackpool FC, on Wednesday 6th October regarding the feasibility of upgrading the floodlighting facilities to the football ground. This involved erecting 6 new lighting columns, to carry the floodlights, on top of the existing north stand and also, due to excess wind pressure on these new columns, to remove an area of cladding to the full length of the rear of the stand to allow the wind to blow through to compensate for this.

**To compound the situation; this had to be carried out over a period of 7 days;**

to give the lighting contractor enough time (3 days) to fit the lights. This situation arose because newly promoted to the premier league, Blackpool, had beaten Liverpool FC, at Anfield, the previous week, and now Sky TV wanted to feature Blackpool's evening home match with Manchester City on 17th. October; the only problem was that the efficiency of the existing floodlight system was not good enough to cope with the lighting requirements of Sky TV. Blackpool FC either improved the lighting or lost millions in revenue.

**Not to complete the project on time was not an option!**



Two directors of ASG drove to Blackpool FC and met with FK Howard staff within hours of receiving the call, and following discussions between the parties; with regard especially to very tight time constraints, ASG decided to take up the gauntlet.

Work started immediately with a detailed site survey; this would allow ASG to fabricate the new lighting columns, which in turn could then be quickly galvanised. Whilst this was going on, ASG men were on site removing, and replacing with open mesh panels, the cladding to the rear of the stand. Once the lighting columns had been galvanised they were immediately sent to site for fitting.

All works were finished on the evening of Wednesday 13th. October; giving the lighting contractor his time to complete prior to match day. Result!!



# Case Study : Birmingham New Street



In Mid 2011 ASG were contracted to manufacture and install a new service spine to the new £600 million Birmingham Gateway Plus project at Birmingham New Street Station. Measuring 130 meters long, 7.5 meters wide and weighing over 300 tonnes it would become Europe's largest ever service spine.

Due to the complexity of the project NG Bailey's Offsite Division needed to engage with a subcontractor, who had the capacity and the capability to undertake the manufacture of the large prefabricated spine modules. ASG were selected as the preferred sub-contractor from their approved supplier base.

Working closely with Bailey's Off-site manufacturing division and their design engineers, ASG's experienced fabrication team were able to offer practical solutions to some of the design challenges which could then be incorporated into the super structure using up to date 3D CAD modelling systems enabling us to produce concise fabrication drawings.

**The spine modules were manufactured on a production line to increase safety and efficiency throughout the workshop.**



Firstly the lattice trusses that would form the side of the spine modules and give them their strength were produced as a flat frame, these were fully welded and quality checked before adding the unistrut containment arms that would carry the services. Next the frames were assembled into 3D spine modules on a purpose built jig to ensure each module was manufactured to exact tolerances. Quality checks at each stage of the process ensured no defects and no reworks.

Following the fabrication the frames were transferred to our specialised painting department to receive its multi-coat, high specification intumescent fire proof coating. To ensure the correct specification of a 1 hour fire rating was achieved, over 1000 individual readings were taken per module, using the latest thickness gauge technology available.





The modules were then transported to Bailey Offsite to be populated with the Mechanical and Electrical components ready for the site installation.



A purpose built track was then constructed to run the full length of the station to spread the load of each module equally across the concourse, reducing direct load to the concrete deck.

**The installation phase presented the most challenging aspects of the project,**

as the spine was to be installed over a live railway station with a 1960's concrete deck that could not cope with the sheer weight of each module. The spine was to be suspended from the 24 existing concrete columns, drilling 144 holes, 38 diameter through up to 600mm of concrete producing over 80 liner metres of concrete cores, without damaging any of the steel reinforcing. These holes would then be used to fix the vierendeel support brackets that were to support the service spine in its entirety.



The next stage of this epic build was to fit the "vierendeel" girders, also constructed at ASG, into the roof which the spine would eventually be fixed to, but with the floor proving to be too weak to lift from, all structures would have to be hoisted from the concrete slab above.

With this in mind we constructed factory tested lifting brackets which were anchored and tested, to the concrete slab above, allowing the "vierendeels" to be chain blocked into position and fixed accordingly.

Working nights to avoid disruption to the station and other trades, a team of up to 8 operatives would then take delivery of the spine modules, 2 at a time, craning them onto the purpose built track and bolting the 2 spine modules together to create 1 section before beginning the task of pulling the section the full length of the station with a specially designed “tirfor” pulling tool.

4 x 20 tonne chain blocks would then be attached to the inbuilt lifting points within the vierendeel girders at each corner of the module and attached to the tested lifting brackets bolted to each of the corners on the module before lifting could commence.



4 men then began the slow and steady task of pulling the chain blocks which lifted the spine sections into their final position and bolt to the girders thus creating the “mechanical and electrical” service spine.

With all 24 modules fully installed, the temporary track was removed and cleared from site leaving the 130 metre, 300 tonne spine suspended within the ceiling, ready for all the other trades to come in and transform the former multi-story car park into a 21st century retail and passenger concourse it would finally become.

**Delivered:  
a 21st century retail and  
passenger concourse**



ASG Fabrications LTD  
Unit 1A Greenhill Mills  
Grange Road, Batley  
West Yorkshire, WF17 6LH

T | 01924 470 377  
F | 01924 470 322  
E | enquiries@asgfabrications.com

---

[www.asgfabrications.com](http://www.asgfabrications.com)